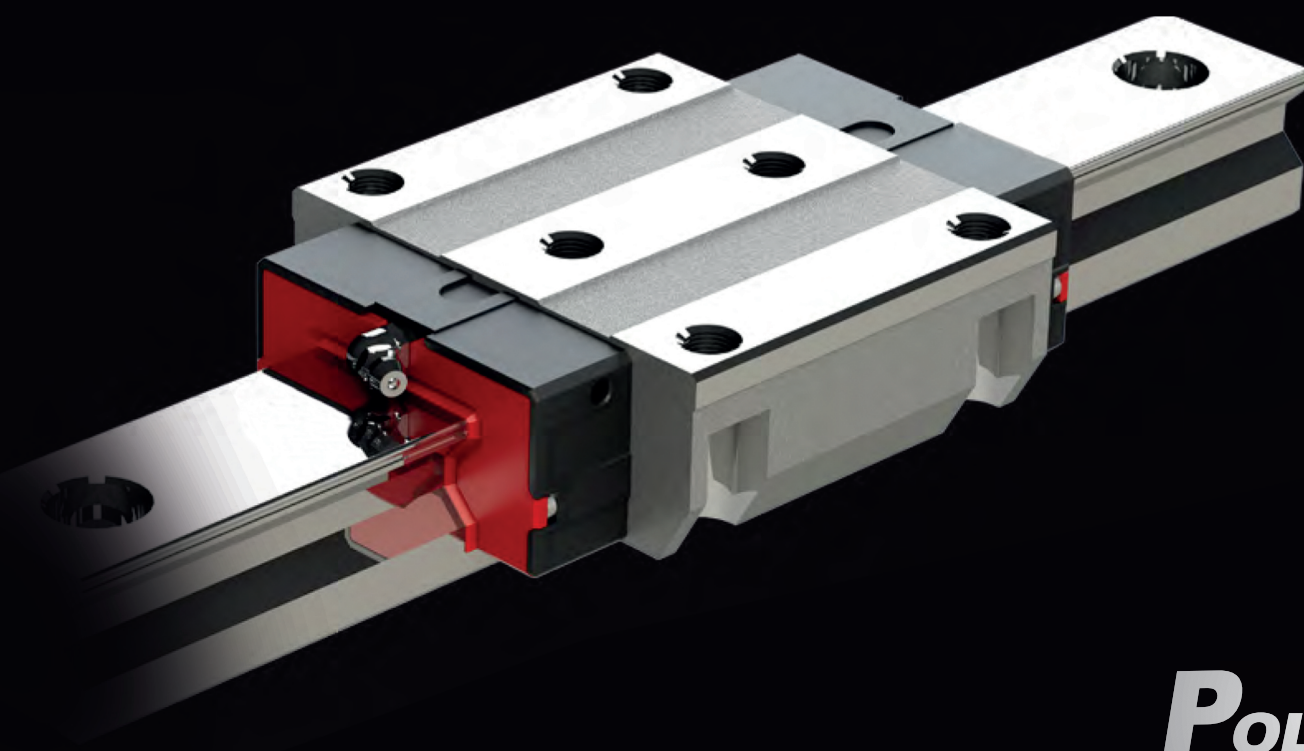
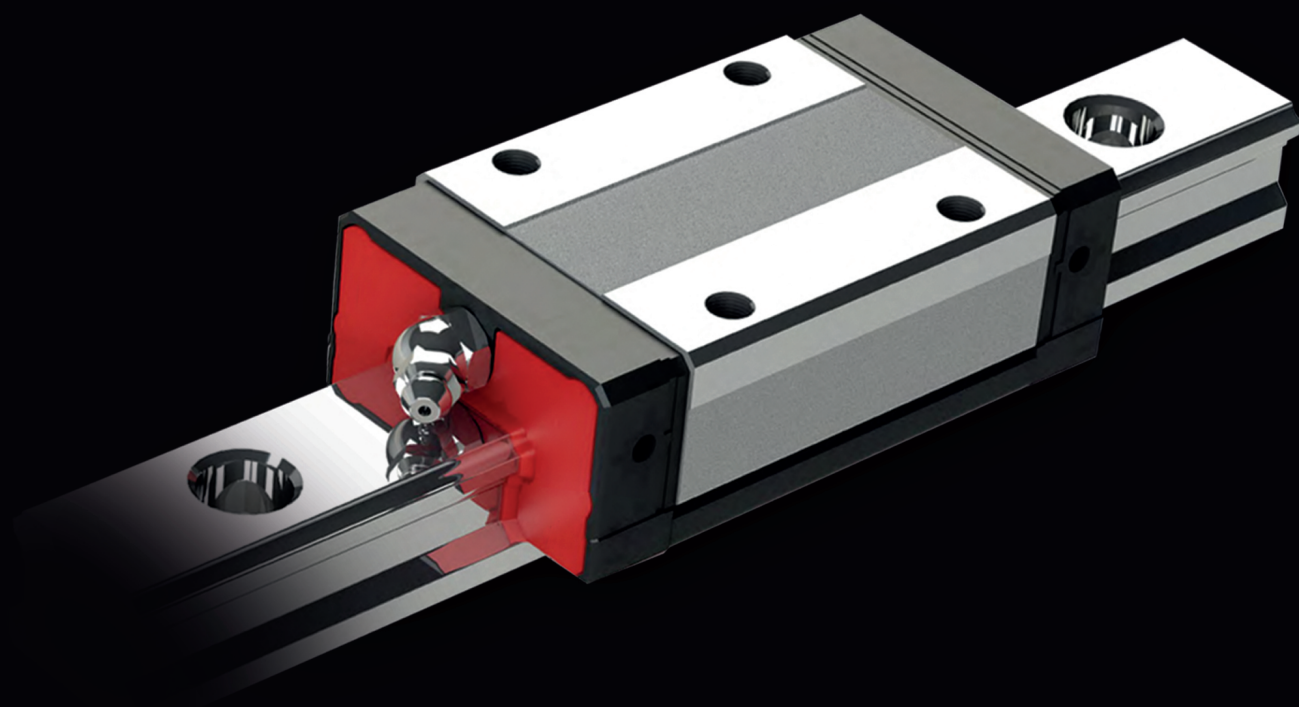


PMATECH

POLYMAK MOTION AUTOMATIONS



POLYMAK

www.polymak.com


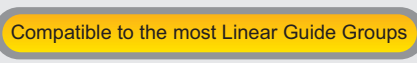

As **POLYMAK** we have a brand new product in the market made in Taiwan and tested for all of its qualities.

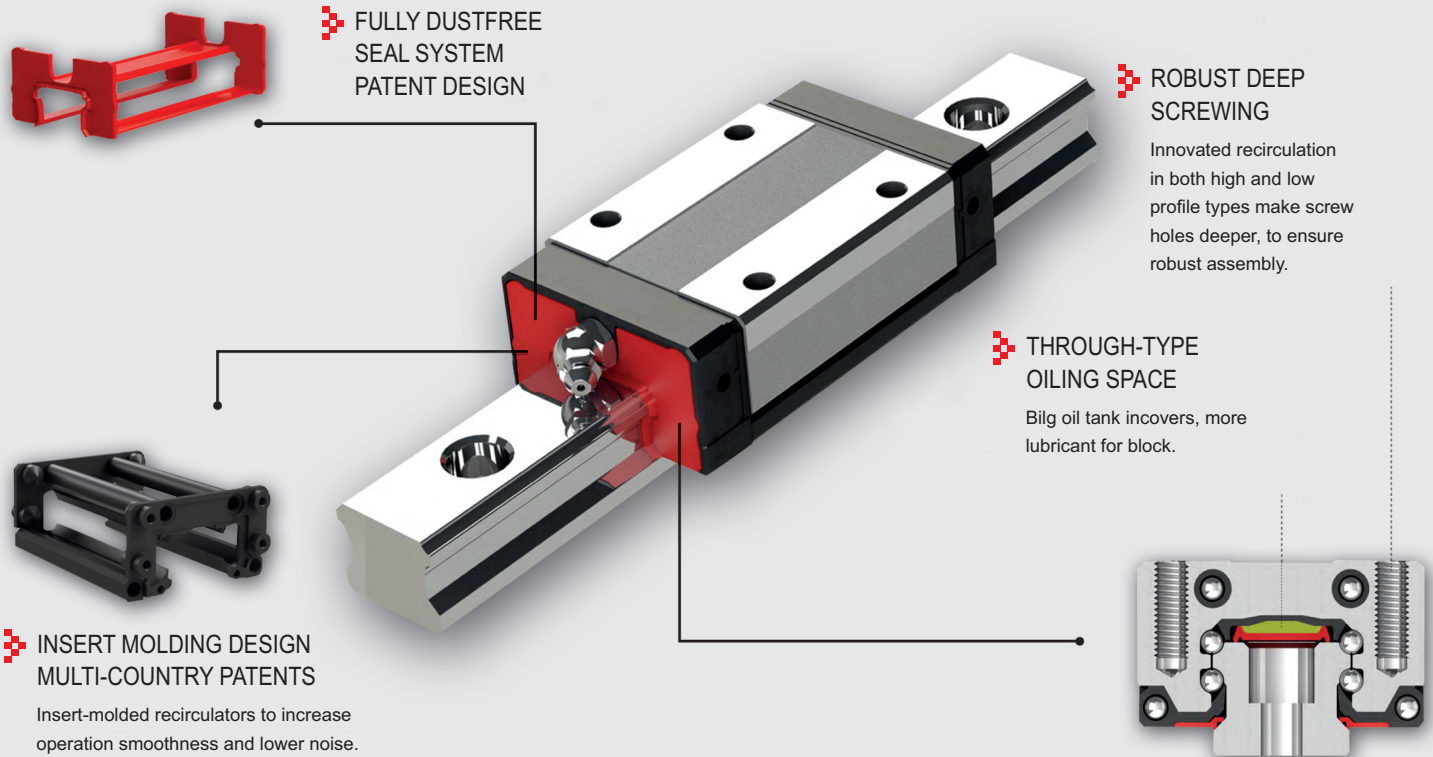
✓ **Quality**
 ✓ **Fair Price**
 ✓ **Made in Taiwan**
 ✓ **Seal System Patent Design**

✓ **Win-Win distribution**
 ✓ **Advantageous Prices**
 ✓ **Supply support**
 ✓ **Stock of products always available**

POLYMAK started in 1998 as sales in Industrial equipment in several areas in Turkey. Now with the help of our multinational business partners and investing in R & D and production automation of key components, and production technology patents in Taiwan, China, Europe and the United States. Our products are tested for their material and they are similar or even higher in qualities than other recognizable brands in the market.

- **1998** POLYMAK Established in Istanbul
- **2001** First company in Turkey to distribute HIWIN products
- **2012** Establishment of Bursa Branch
- **2013** Exclusive distribution of TBI MOTION
- **2017** Establishment of Izmir Branch
- **2017** Creation of our new brand PMATECH

 **Global Standart Parts Inventory**  **Compatible to the most Linear Guide Groups**  **Delivery from Stock, Modularized Design**



NUMBERING OF LINEAR GUIDES

AS	H	25	C	N	2	L500	N	Z0
1	2	3	4	5	6	7	8	9

1 | Specification Number

2 | Type Code

H: High profile
 C: Low profile

3 | Size

15 / 20 / 25 / 30

4 | Flange Type

C: Flange type
 V: Non-Flange type

5 | Length of Block

N: Normal Type

6 | Blok No. Per Rail

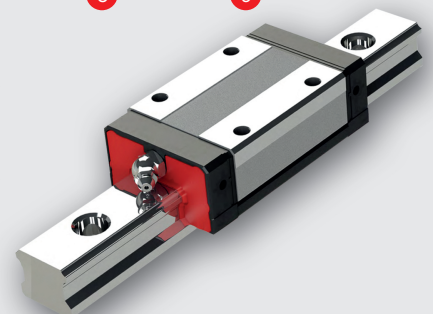
7 | Rail Length

8 | Precision Grade

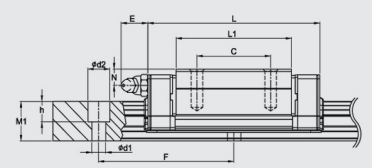
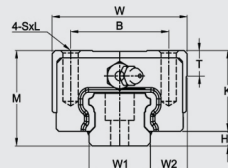
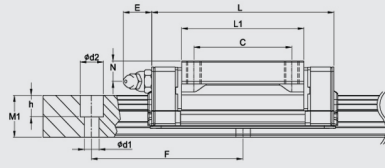
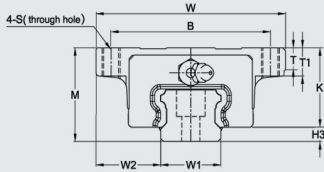
N: Normal

9 | Preload

Z0: Zero clearance (0)

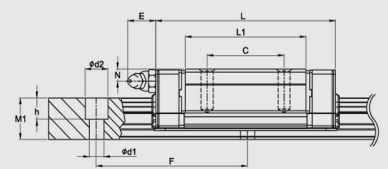
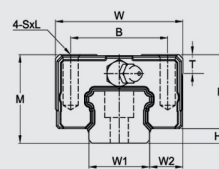
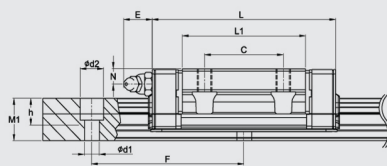
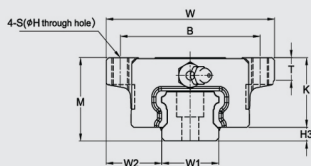


HIGH PROFILE - FLANGE type / HIGH PROFILE - NON-FLANGE type



Model No	Assembly Dimension			BlockDimension		LoadRating (KN)	
	M	W	L	B	C	C	Co
ASH15VN	28	34	58,3	26	26	14,2	24,2
ASH15CN	24	47	58,3	38	30	14,2	24,2
ASH20VN	30	44	71,6	32	36	22,3	38,4
ASH20CN	30	63	71,6	53	40	22,3	38,4
ASH25VN	40	48	85,4	35	35	31,7	52,4
ASH25CN	36	70	85,4	57	45	31,7	52,4
ASH30VN	45	60	100,1	40	40	44,8	66,6
ASH30CN	42	90	100,1	72	52	44,8	66,6

LOW PROFILE - FLANGE type / LOW PROFILE - NON - FLANGE type



Model No	Assembly Dimension			BlockDimension		LoadRating (KN)	
	M	W	L	B	C	C	Co
ASC15VN	24	34	58,3	26	26	14,7	16,5
ASC15CN	24	52	58,3	41	26	14,7	16,5
ASC20VN	28	42	71,6	32	32	19,6	23,4
ASC20CN	28	59	71,6	49	32	19,6	23,4
ASC25VN	33	48	85,4	35	35	31,5	36,4
ASC25CN	33	73	85,4	60	35	31,5	36,4
ASC30VN	42	60	100,1	40	40	46,5	52,7



Muhendislik İc ve Dis Ticaret

Esensehir Mah. Kurkcüler Cad. Eryılmaz Sk.
No:31 34776 Dudullu - Ümraniye / İstanbul / TURKEY
Tel: (+90) 216 - 527 30 30 **Fax:** (+90) 216 - 527 65 10
Web: www.polymak.com **E-mail:** info@polymak.com